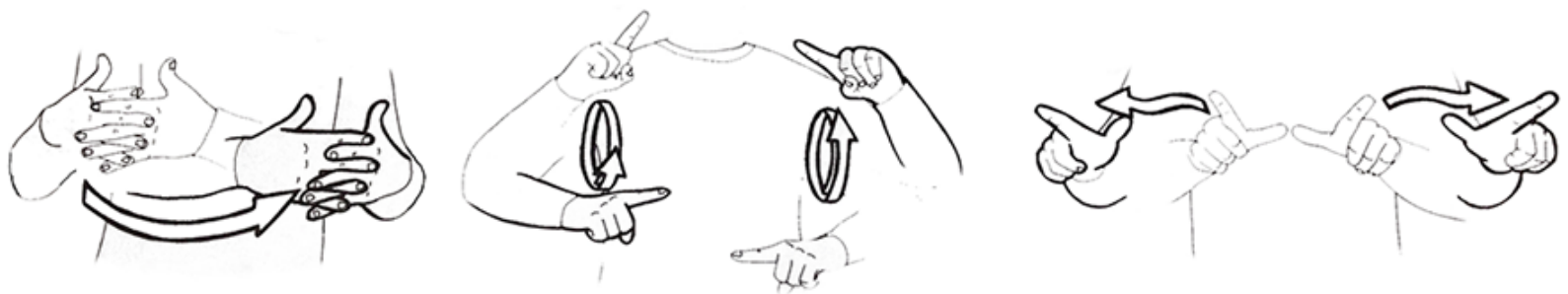


A Story of Willful Ignorance: The Hidden Social Epidemic of Language Deprivation



Presented by

Wyatte C. Hall

Wyatte C. Hall, Ph.D. is a Research Assistant Professor of Obstetrics and Gynecology, Pediatrics, and Public Health Sciences at the University of Rochester Medical Center. As a Deaf population health scientist, his research focuses on language development as a social determinant of health, and on the relationship between early childhood language experiences and lifespan outcomes in the deaf population.

Before his recent completion of a three-year research postdoctoral fellowship at the University of Rochester, Wyatte received his Ph.D. in Clinical Psychology from Gallaudet University and completed a clinical postdoctoral fellowship at the University of Massachusetts Medical School.



Pharmacy/Biology Building
PBB 129

Wednesday, April 3rd
1:00 - 2:30 pm

Join us for
refreshments
following the
presentation

This lecture will be given in ASL and interpreters and CART will be provided for the duration of the event. If you require an accommodation to participate in this event, please contact Carla Gomez, carla.gomez@uconn.edu, by March 27th.

UConn complies with all applicable federal and state laws regarding non-discrimination, equal opportunity, affirmative action, and providing reasonable accommodations for persons with disabilities. Contact: Office of Institutional Equity; 860.486.2943; equity@uconn.edu; www.equity.uconn.edu